

How it works



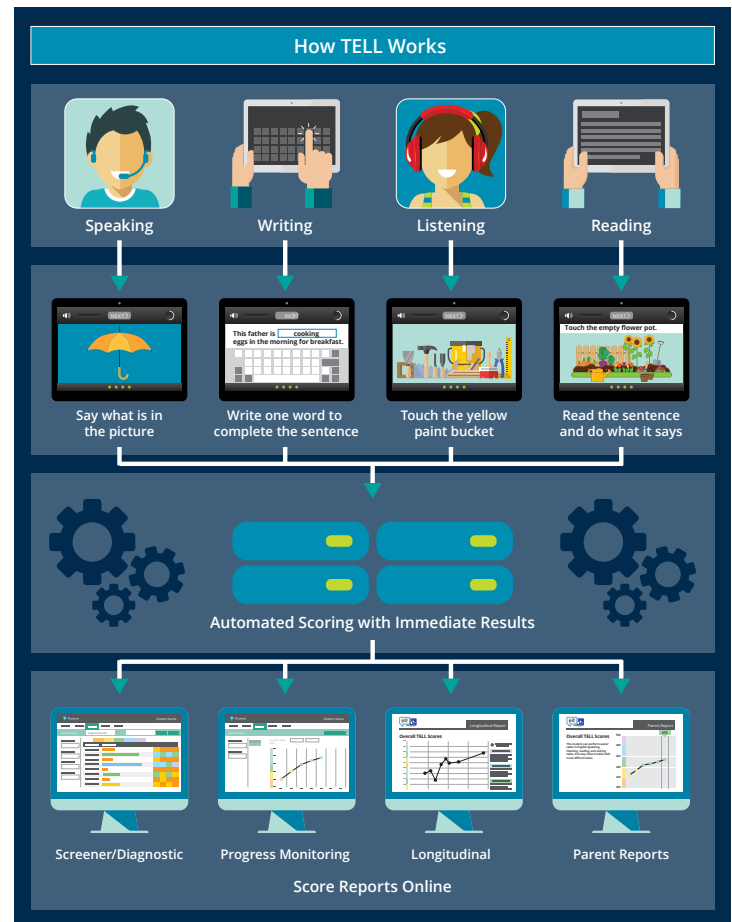
Pearson's Test of English Language Learning (TELL™) is a touchscreen-delivered language proficiency assessment that can be used to screen, diagnose, and progress monitor English language learners in grades K–12.



TELL's technology allows students to sign in, receive instructions about the assessment, and demonstrate their understanding on a game-like platform. It's as easy as swiping, speaking, and typing in responses to what they see and hear as the questions guide them through a series of formats — including videos and graphics.

A true assessment of a learner's understanding of the English language, this app-based, web-enabled platform also provides same-day scoring and reporting.

- All four language skills are tested: reading, writing, listening, and speaking.
- The test is delivered on touchscreen devices (like iPads or Android tablets) and provides a game-like user experience.
- All four language skills are automatically scored.
- Rich reports give educators the data they need to drive instruction.



Let us TELL you more. PearsonAssessments.com/TELL

800-328-5999 | PearsonAssessments.com

© 2022 Pearson Education, Inc. or its affiliates. All rights reserved. Pearson and TELL are trademarks, in the US and/or other countries, of Pearson plc. CLINA1174 EL 03/22

