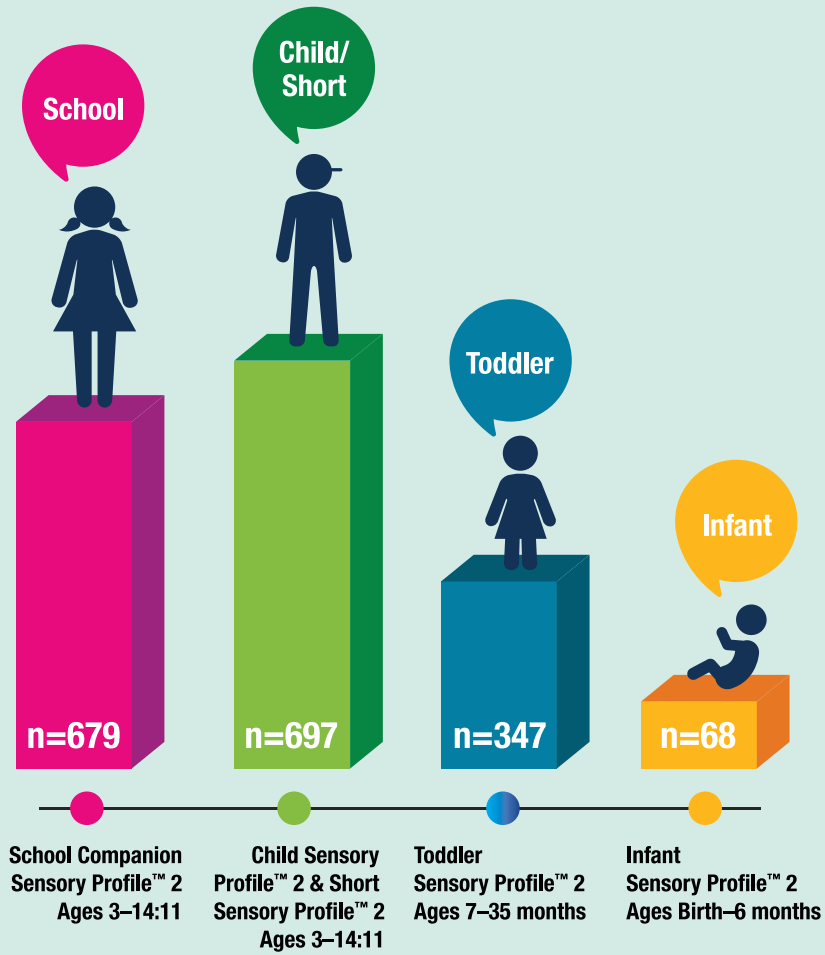


## DEMOGRAPHICS

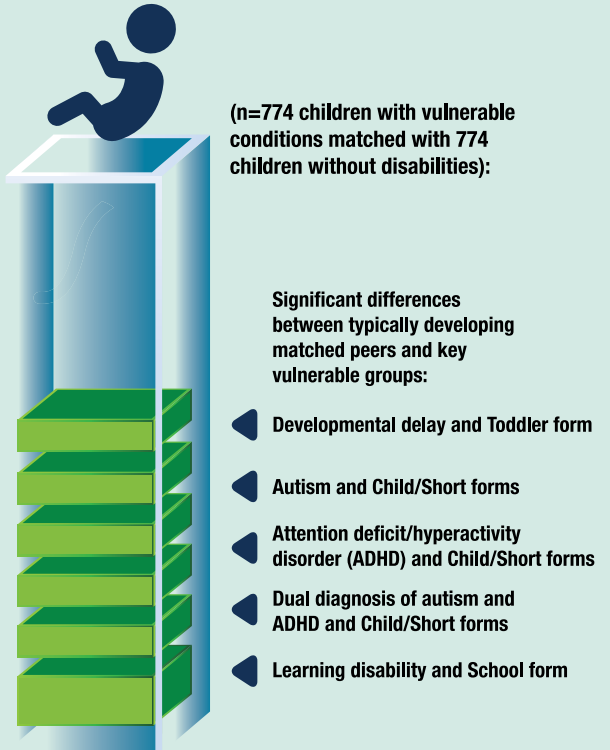


1,791 DEMOGRAPHICALLY REPRESENTATIVE CHILDREN AGES BIRTH THROUGH 14:11

- 337 children rated on both the Child Sensory Profile™ 2 and School Companion Sensory Profile™ 2
- 898 boys and 893 girls
- 10% of standardization sample included children with vulnerable conditions, closely matching their incidence in the general population

## VALIDITY

### Clinical Groups



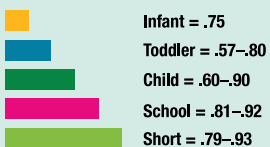
Note: Short Sensory Profile 2 discriminates on a similar pattern to Child Sensory Profile™ 2

### Correlation Studies with Other Measures

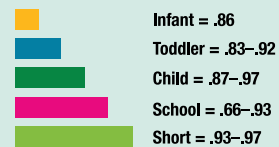


## RELIABILITY

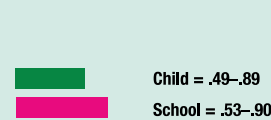
### Internal Consistency



### Test-Retest Reliability



### Interrater Reliability



For further information including author podcasts visit [PearsonAssessments.com/SensoryProfile](http://PearsonAssessments.com/SensoryProfile)

800.627.7271 | [PearsonAssessments.com](http://PearsonAssessments.com)